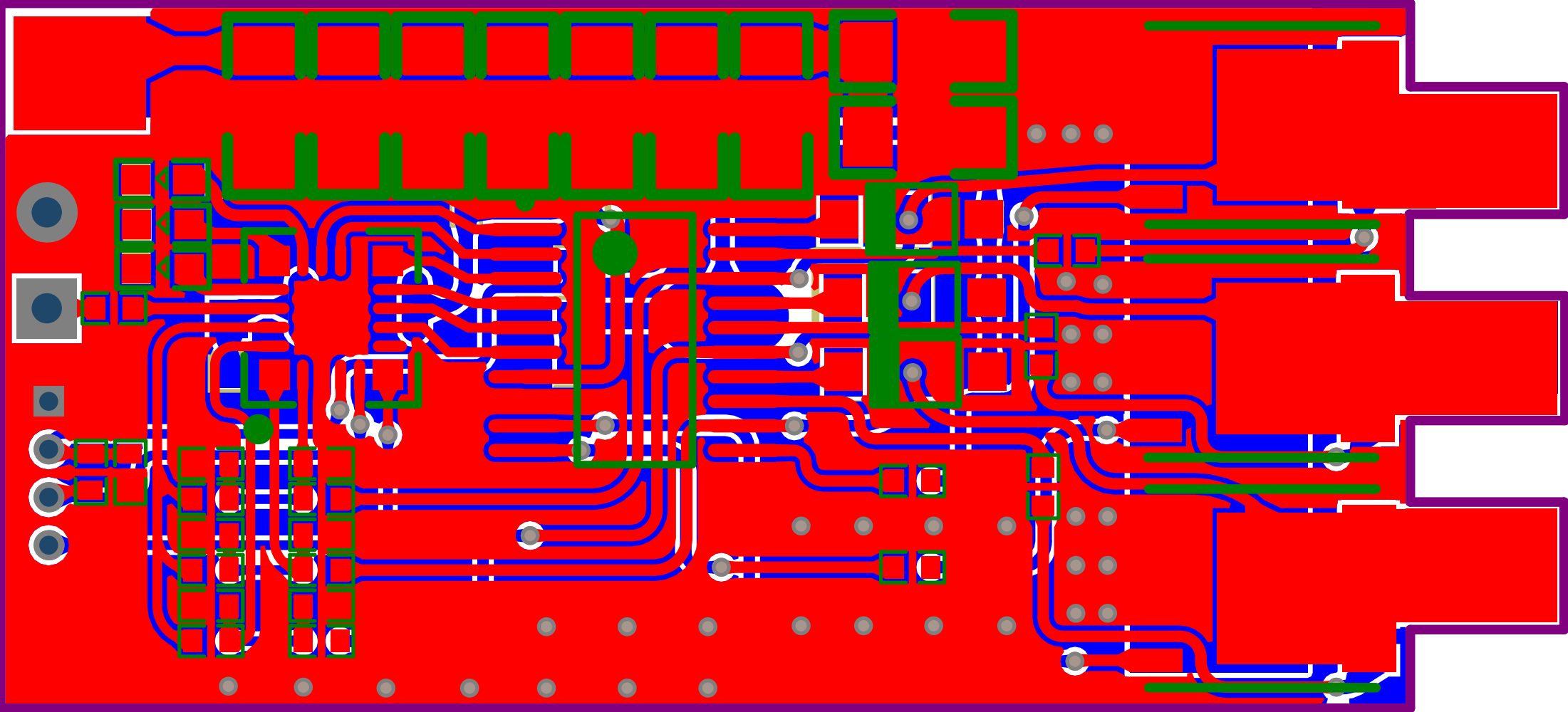


Title		
ESC		
Size	Number	Revision
A4		
Date:	2019/9/7	Sheet of
File:	C:\Users\...\ESC.SchDoc	Drawn By: CYF



# Bill of Materials

Bill of Materials For Project [ESC.PrjPCB] (No PCB Document Selected)

Source Data From: ESC.PrjPCB  
 Project: ESC.PrjPCB  
 Variant: None

Creation Date: 2019/9/7 11:13:58  
 Print Date: 43715 43715.46835

Footprint	Comment	LibRef	Designator	Description	Quantity
C 0402	10u	C	C1, C6, C9	无极性贴片电容	3
C 0805	1.5u	C	C2, C8, C15	无极性贴片电容	3
C 0402	104	C	C3, C4, C5, C7, C14	无极性贴片电容	5
C 0402	10uf	C	C10, C11, C12	无极性贴片电容	3
C 0603	10uf	C	C13	无极性贴片电容	1
C 1206	47uF	C	C20, C21, C22, C23, C25, C26, C27, C28, C29	无极性贴片电容	9
SOD-123	1N5819	1N5819	D1, D2	肖特基二极管	2
SLAB-TSSOP-20_M	FD6288	FD6288	J1		1
SIP2	CON2	CON2	J2		1
download	CON4	CON4	J3		1
POWER	POWER	POWER	J4, J6		2
MOTOR	MOTOR	MOTOR	J5		1
LED 0603R	BLUE	LED-SMD	LED1, LED2, LED3	贴片LED	3
LC-DFN-8_5x6mm	MOS	MOS	M1, M2, M3, M4, M5, M6		6
R 0402	1K	R	R1, R13, R14, R15, R18, R19, R20	贴片电阻	7
R 0402	10R	R	R2, R3, R8, R12, R16, R17	贴片电阻	6
R 0402	10K	R	R4, R5, R6, R7, R9, R10, R11	贴片电阻	7
EFM8BB21F16G-C-QFN20	EFM8	C8051F983-GM	U1	Ultra Low Power, Capacitive Sensing MCU, 25 MHz, 0.5 kB RAM, 4 kB Flash, -40 to 85 degC, 20-pin QFN	1
LC-SOT-89(SOT-89-3)	HT7333/HT7533	HT71xx	V1	LDO线性稳压芯片	1
LC-SOT-89(SOT-89-3)	78L06/08/12	AMS1117	V2	三端稳压芯片	1
SOD-123	SS14	SS14	VD1, VD2, VD3	肖特基二极管	3
					67

Approved	Notes